

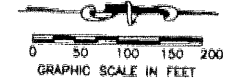
MIRASOL PLAT ONE

PART OF GOLF DIGEST P.C.D.
SITUATE IN SECTIONS 33 AND 34, TOWNSHIP 41 SOUTH, RANGE 42 EAST,
AND SECTIONS 3 AND 4, TOWNSHIP 42 SOUTH, RANGE 42 EAST,
CITY OF PALM BEACH GARDENS,
PALM BEACH COUNTY, FLORIDA
MARCH 2000 SHEET 9 OF 10

22

STATE OF FLORIDA
COUNTY OF PALM BEACH
THIS PLAT WAS FILED FOR
RECORD
THIS _____ DAY OF
AD, 2000 AND DULY RECORDED
IN PLAT BOOK _____ ON PAGES
_____ AND _____
DOROTHY H. WILKEN, CLERK
BY: _____, D.C.

CIRCUIT COURT SEAL

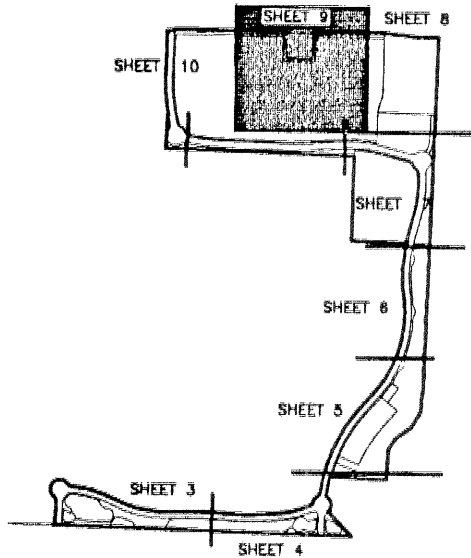
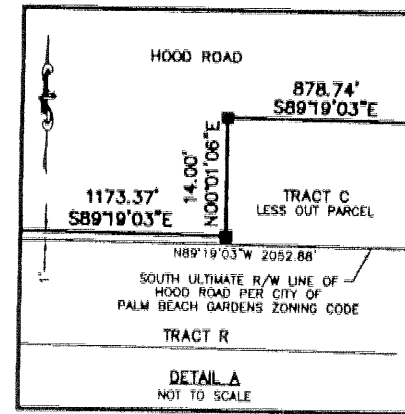
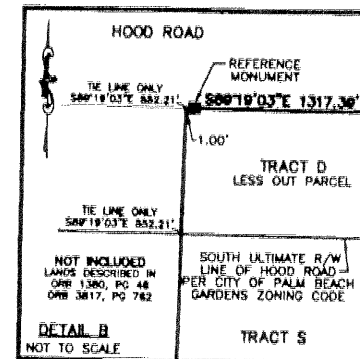


PLAT NO. 10
EASTPOINTE SUBDIVISION
PB 41, PG 65

LEGEND

- L ARC LENGTH
- AE ACCESS EASEMENT
- BE BUFFER EASEMENT
- A CENTRAL (DELTA) ANGLE
- CCB CIRCUIT COURT BOOK
- CH CHORD
- (C) CALCULATED
- (D) DEED
- DB DEED BOOK
- DE DRAINAGE EASEMENT
- ESMT EASEMENT
- FPL FLORIDA POWER AND LIGHT
- IEE INGRESS/EGRESS EASEMENT
- LAE LIMITED ACCESS EASEMENT
- LME LAKE MAINTENANCE EASEMENT
- LMAE LAKE MAINTENANCE ACCESS EASEMENT
- LSE LIFT STATION EASEMENT
- (NR) NON-RADIAL
- NO. NUMBER
- PCD PLANNED COMMUNITY DEVELOPMENT
- ORB OFFICIAL RECORD BOOK
- PB PLAT BOOK
- PG(S) PAGE(S)
- R RADIUS
- RFB ROAD PLAT BOOK
- SLE SEWER LINE EASEMENT
- SUA SEACOAST UTILITY AUTHORITY
- (TYP) TYPICAL
- UR UTILITY EASEMENT
- WL WATER LINE EASEMENT
- WSE WATER AND SEWER EASEMENT
- PERM PERMANENT REFERENCE MONUMENT
- SET LB-048 SET LB-048
- PERM PERMANENT CONTROL POINT
- SET LB-048 SET LB-048
- CL CENTERLINE

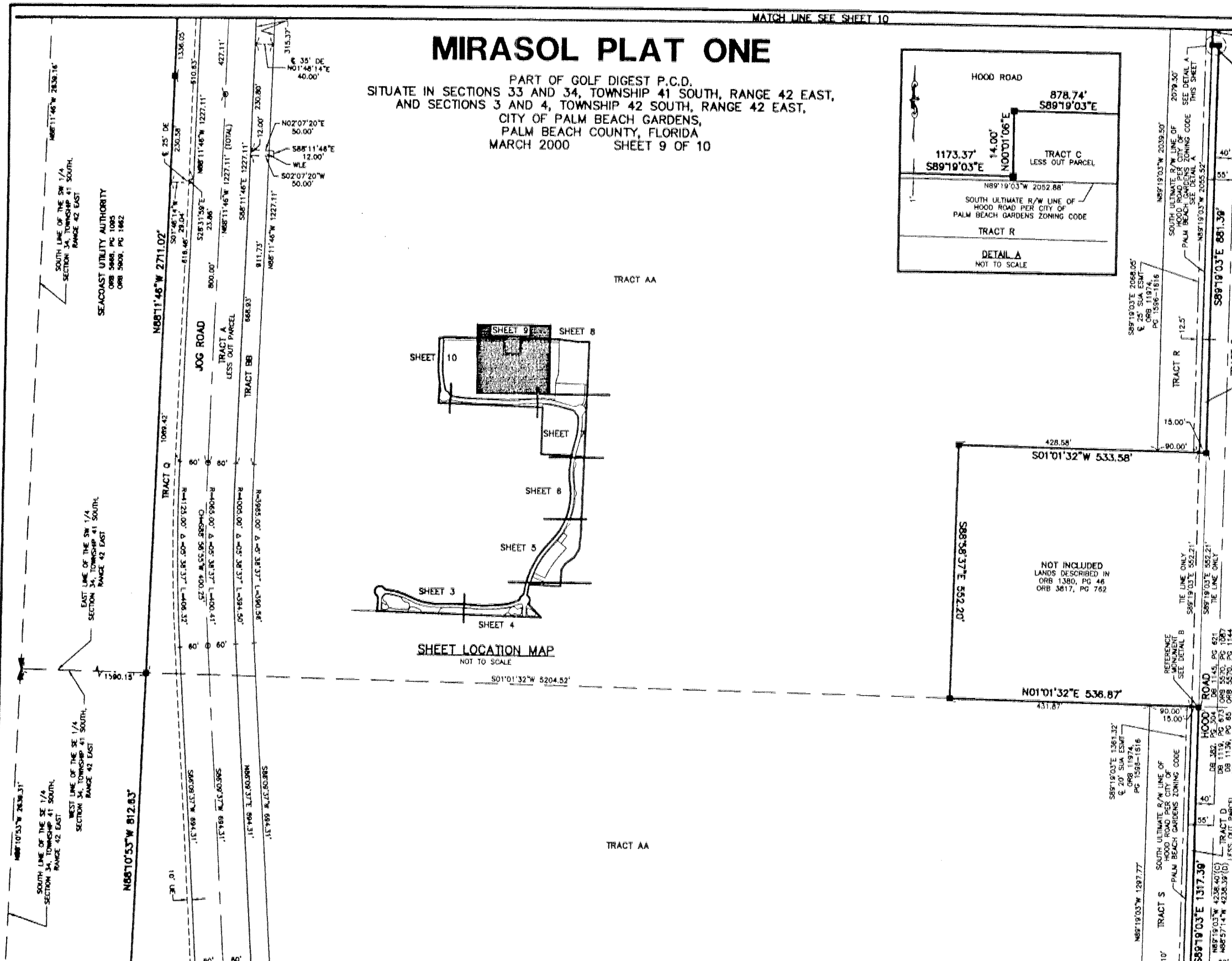
PLAT NO. 13A
EASTPOINTE SUBDIVISION
PB 61, PG 99



SHEET LOCATION MAP
NOT TO SCALE

TRACT AA

TRACT AA

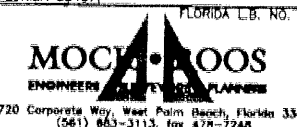


MATCH LINE - SEE SHEET 7

MATCH LINE - SEE SHEET 10

THIS INSTRUMENT WAS PREPARED BY MARY HANNA CLODDETER, P.E., IN THE OFFICES OF MOCK, ROOS & ASSOCIATES, INC., 5720 CORPORATE WAY, WEST PALM BEACH, FLORIDA 33407.

SCALE:
1" = 100'
P.A. NO.:
99310.00
DATE:
MARCH, 2000
DRAWING NO.:
41-42-33-18



5720 Corporate Way, West Palm Beach, Florida 33407
(561) 863-3113, fax 478-7248

FLORIDA L.B. NO. 48

SHEET 9 OF 10
MIRASOL PLAT ONE
PART OF GOLF DIGEST P.C.D.
SITUATE IN SECTIONS 33 AND 34,
TOWNSHIP 41 SOUTH, RANGE 42 EAST,
AND SECTIONS 3 AND 4,
TOWNSHIP 42 SOUTH, RANGE 42 EAST,
CITY OF PALM BEACH GARDENS,
PALM BEACH COUNTY, FLORIDA

S:\work\projects\m1\m1\mirasol.dwg 10/26/00 11:16:27 AM EDT

REV: 08-26-00
CAD FILE:
TAYLOR\GOLF\MP08